





LIVING UNLIMITED



CONCEPT DESIGN

*Living a complete and balanced...at Artemis
is like living amidst the unlimited sky.*

Artemis 素坤逸路 77 位于马路上素坤逸路 77 还是众所

周知 翁聿 离开火车轻轨翁聿

大概800米 这个位置到处都是住宅，拥有所有便利设施的丰富环境。不管是商店商店，饭店和其他公用事业服务，例如民政事务处，水务处，派出所，消防局包括学校和医院被认为是完整的生活需要在项目附近，将会有Hypermarket และ Community Mall

还是百货商店 例如 Big C Extra, Habito Mall, People Park, Tesco Lotus, Century The Movie Plaza 2这个位置相当肥沃。

Artemis 素坤逸路 77 30 层高公寓 1 楼房 项目面积 3-3-53 莱客
厅有 673 个单元选择一个房间类型 1 卧室, 2 卧室, 起始面积 31-47 平方
米, 立即完成并准备好。完整的项目设施, 如接待厅, 信箱室, 游泳
池, 健身中心, 休闲公园, 门禁卡控制, 288 个停车位, 闭路电视, 24
小时保安系统。

Artemis 素坤逸路 77 适合想要完成公寓并准备搬入的人在翁
聿被认为离防弹少年团不远轻轨和价格不是很高。有各种大小的房
间可供选择，以一间卧室为重点，为房间提供了良好的空间。有所有
要使用的主要部分。















GROUND FLOOR^{*,+}

PLAN



SURROUNDINGS ⁺₊

SHOPPING PLAZA

- The Distric Em (Emporium / Emquartier)
- Gateway Ekamai
- Terminal 21
- Tesco Lotus / Big C / Max Value

EDUCATIONAL INSTITUTES

- Srivikorn School
- International School (Wells / Berkeley / NIST)
- Bangkok University

HOSPITAL

- Samitivej Hospital
- Sukhumvit Hospital
- Theptarin Hospital

PARKS

- Benchakitti Park
 - Benchasiri Park
 - Suanluang RAMA IX Park
-



PROJECT DETAILS ^{x+}

Project Name	:	Artemis Condominium		
Project Owner	:	CTCC Engineering Company Limited.		
Location	:	Located on Soi On-nut Sukhumvit 77 Prakanong Bangkok		
Detail of Building	:	30 Storey Condominiums		
		<ul style="list-style-type: none">• Floor 1st Lobby / SHOP / PM office / Parking• Floor 2nd – 5th Parking lot• Floor 6th Facilities / Swimming Pool / Garden• Floor 6th – 30th Condominium Unit		
Total of Units	:	673 condominium units with 3 shop house		
Room Type	:	10 Room types		
1 Bedroom	:	1B-A	26.58	SQ.M.
		1B-B	30.43	SQ.M.
		1B-C	35.24	SQ.M.
		1B-C2	34.68	SQ.M.
		1B-D	30.62	SQ.M.
2 Bedrooms	:	2B-A	53.97	SQ.M.
		2B-B	46.68	SQ.M.
		2B-B2	46.39	SQ.M.
		2B-C	45.07	SQ.M.
3 Bedrooms	:	3B-A	74.11	SQ.M.
Facilities	:	Lobby, Swimming Pool, Fitness, Garden		
Parking	:	288 Cars		
Price Start	:	1.99 MB.		
Sinking Fund	:	500 THB / sq.m.		
Maintenance Fee	:	40 THB / Sq.m		



N FLOOR 6

- 1 Bedroom-A
- 1 Bedroom-B
- 1 Bedroom-C
- 1 Bedroom-C2
- 1 Bedroom-D
- 2 Bedroom-A
- 2 Bedroom-C





N FLOOR 22-24

- 1 Bedroom-A
- 1 Bedroom-B
- 1 Bedroom-C
- 1 Bedroom-C2
- 1 Bedroom-D
- 2 Bedroom-A
- 2 Bedroom-B
- 2 Bedroom-B2
- 2 Bedroom-C





N FLOOR 25-27

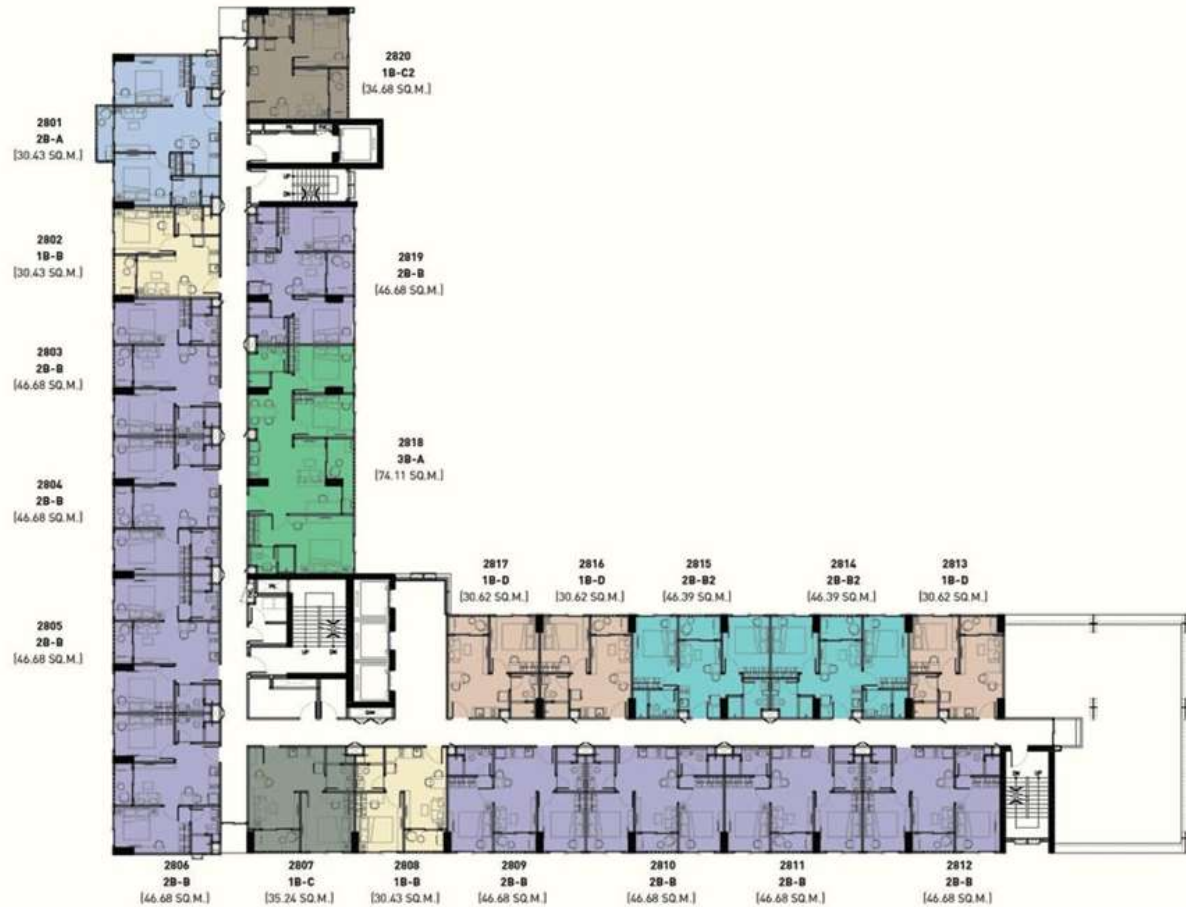
- 1 B-B
- 1 B-C
- 1 B-C2
- 1 B-D
- 2 B-A
- 2 B-B
- 2 B-B2
- 2 B-C
- 3 B-A





N FLOOR 28 - 30

- 1 B-B
- 1 B-C
- 1 B-C2
- 1 B-D
- 2 B-A
- 2 B-B
- 2 B-B2
- 3 B-A





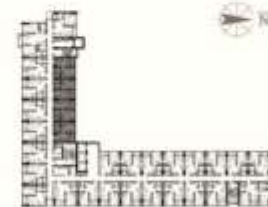






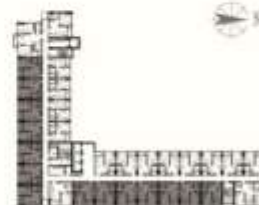


1 BEDROOM
TYPE 1 B - A
26.58 Sq.M.
Fl. 6-24





1 BEDROOM
TYPE 1 B - B
30.43 Sq.M.
Fl. 6-30





1 BEDROOM
TYPE 1 B - C 1
35.24 Sq.M.
FL. FL. 6-30





1 BEDROOM
TYPE 1 B - C2
34.68 Sq.M.
Fl. 6-30





1 BEDROOM
TYPE 1 B - D
30.62 Sq.M.
FL. 6-30

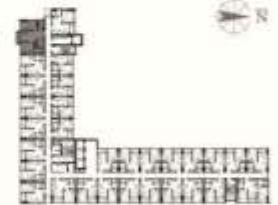








2 BEDROOM
TYPE 2 B - A
53.97 Sq.M.
Fl. 6-30





2 BEDROOM
TYPE 2 B - B 1
46.68 Sq.M.
FL. 22-30





2 BEDROOM
TYPE 2 B - B2
46.39 Sq.M.
Fl. 22-30





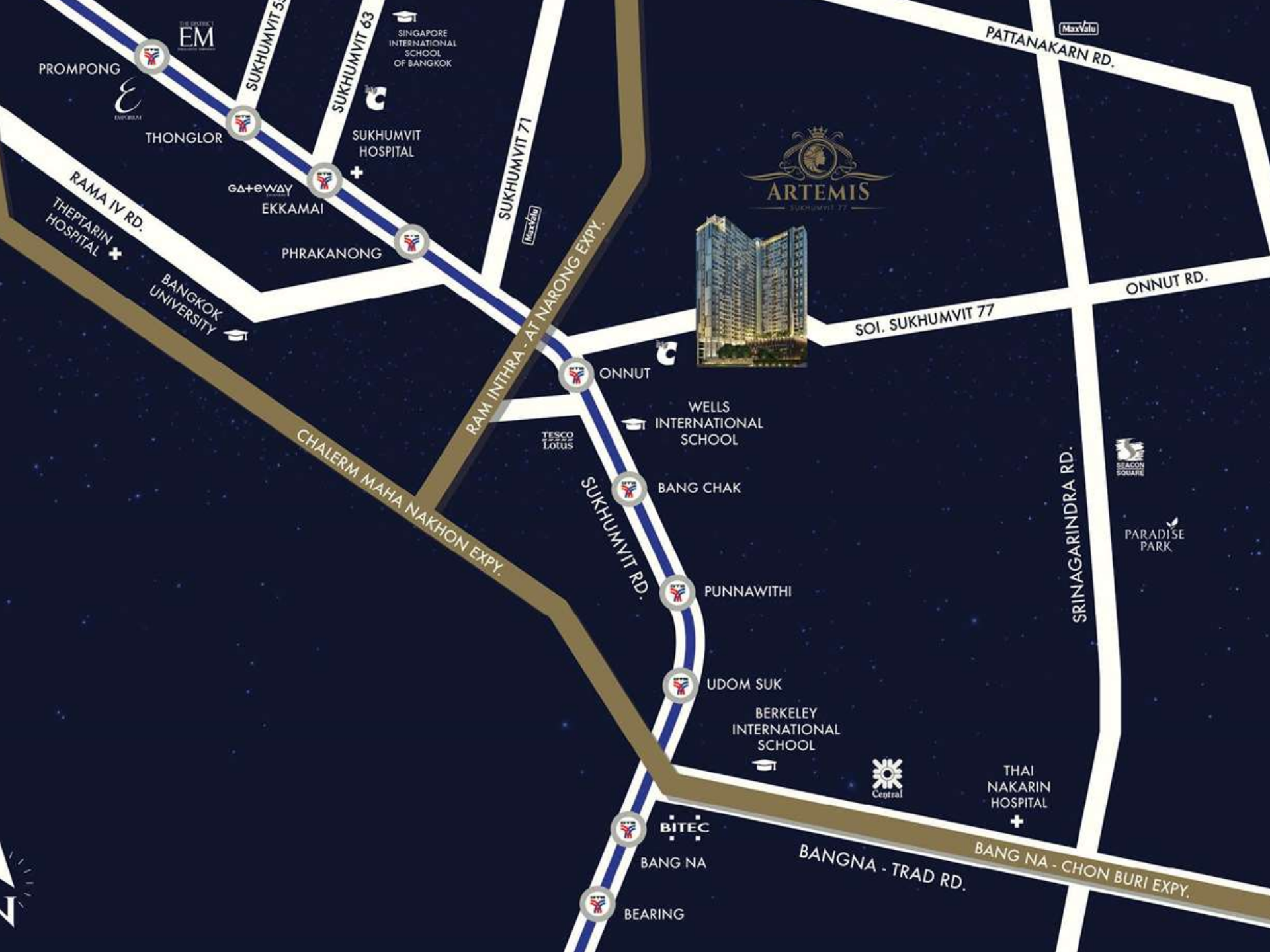
2 BEDROOM
TYPE 2 C
45.07 Sq.M.
FL. 6-27





3 BEDROOM
TYPE 3 B - A
74.11 Sq.M.
Fl. 25-30





THE CENTRAL
EM

PROMPONG

THONGLOR

GA+GWAY
EKKAMAI

PHRAKANONG

CHALERM MAHA NAKHON EXPY.

SUKHUMVIT 71

RAM INTTRA - AT NARONG EXPY.

SUKHUMVIT RD.

BANG NA

BEARING

BITEC



ARTEMIS
SUKHUMVIT 77

ONNUT

WELLS
INTERNATIONAL
SCHOOL

BANG CHAK

PUNNAWITHI

UDOM SUK

BERKELEY
INTERNATIONAL
SCHOOL

THAI
NAKARIN
HOSPITAL

BANGNA - TRAD RD.

BANG NA - CHON BURI EXPY.

PATTANAKARN RD.

SOI. SUKHUMVIT 77

ONNUT RD.

SRINAGARINDRA RD.

PARADISE
PARK





























































































































































































































































































































094 406 9988

www.capitaloneth.com/artemis



Project Owner: CTC Engineering Co., Ltd. Registered Capital 20,000,000 Baht, Office locate at 1194 Rama 6 Rd., Rungsiang, Pathumwan Bangkok. The Condominium has 30 Storey, 1 Building, 673 Units and 3 shop, Constructed on the title deed no. B080, Suanluang Sub-District, Suanluang District, Bangkok. Land area: 3 - 3 53 Rai. The building permit No. 176/2556, complete in October, 2016. The Buyer shall pay Common Area Expenses and Sinking Fund and/or relevant any taxes to the Juristic Person subject to Article of Association and/or Land Department, as the case may be. Information provided is deemed accurate at the time of publication. The company reserves the right to change details and promotions without prior notice. *All illustrations are simulated images for advertising purposes only.